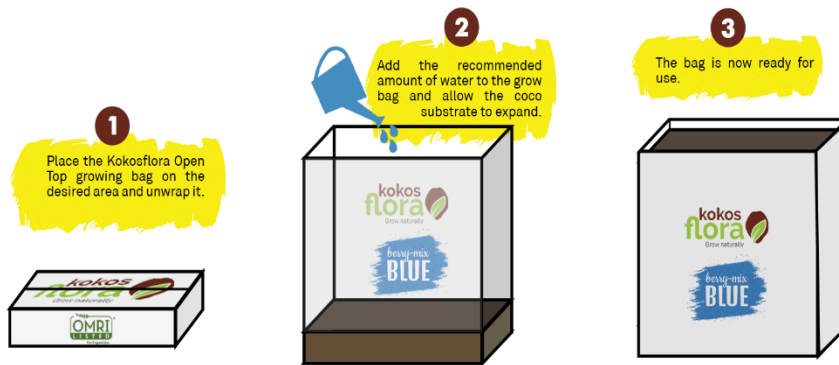


Open Top Growbags

We KOKOSFLORA offers wide range of combination of Coco Peat, Fibres, and chips mixtures with the highest quality, designed for different stages and irrigation systems for commercial berries cultivation. In this way we achieve the most suitable moisture and aeration ratio for the blueberry crop, and we highly recommend our blueberry growers an economical and affordable Open Top Growbag which helps them to achieve maximum profits by the highest crop yields.

BERRYMIX – BLUE – Standard – Open Top Growbags

Article No: KFOTG000247



S. No	Particulars	Description
1	Block Weight	: 3 Kgs (+/- 0.15kg)
2	Block Material	: 30% Husk Chips + 70% Cocopeat (15% Fibre + 85% Cocopeat Fine)
3	Sieve Structure	: Cocopeat (1-8mm) + Husk Chips (8-16mm)
4	EC (1:1.5 method)	: <1.5 mS/cm
5	pH	: 5.4 – 6.8
6	Bag Dimension (LxBXH)	: 300*300*300mm
7	Bag Volume	: 27 Litres (+/- 3%)
8	UV Bag Durability	: 600 GSM – upto 3 years 800 GSM – upto 5 years
9	No of units per Pallet	: 400 Bags
10	No. of Pallets per 40ft HQ	: 20 Pallets
11	No. of units per 40ft HQ	: 8000 Bags per 40ft HQ

